

BUW Die Block Upgrade

Canrig has discontinued production on die blocks that use stop plates fastened to the die block. The new die blocks feature integrated stops designed to minimize risk of dropped objects. Contact your Canrig Sales Representative for availability and pricing.

Discussion

The original design used two die blocks in the backup wrench: one on the stationary (fixed) side, and one on the cylinder side. On the cylinder side, stop plates for repositioning the gripper were attached to the sides of the die block using eight fasteners as shown in Figure 1.

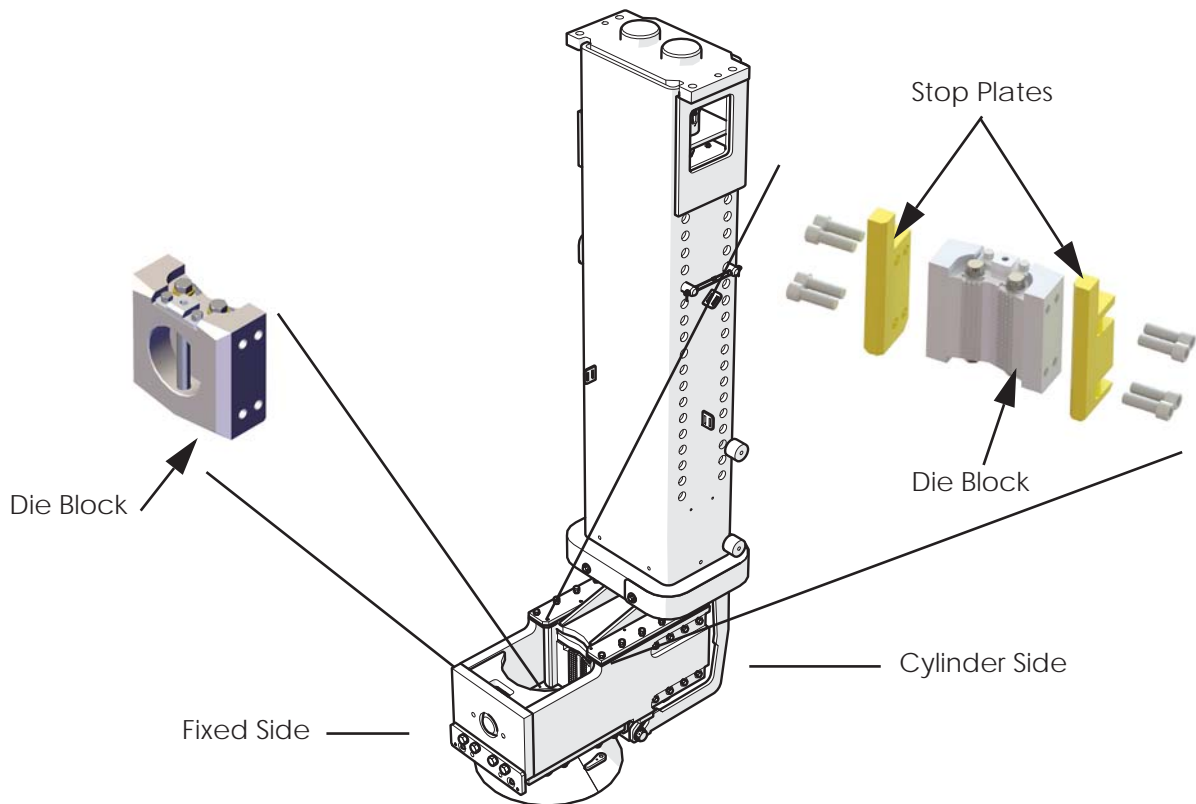


Figure 1: Original Die Block (Shown With Additional Stop Plates)

Two die blocks are now available: a die block as shown in Figure 2, and a die block with integrated stops as shown in Figure 3. Use the die block in the fixed side of the BUW. Use the die block with integrated stops in the cylinder side of the BUW.

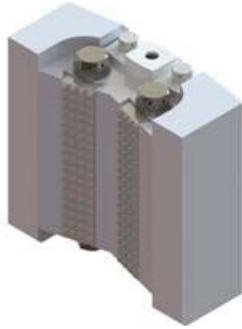


Figure 2: Die Block
(Fixed Side)



Figure 3: Die Block with Integrated Stops
(Cylinder Side)

Replacements:

Refer to Table 1 when ordering die block assemblies. Assemblies include indicated die block, dies, bolts, Nordlock washers, and pin retainer.

Table 1: Die Block Replacement Assemblies

Range	Current Design	Die Block Assembly (Fixed Side)	Die Block Assembly with Integrated Stops (Cylinder Side)
5.75 – 9.00	AY12689	AY23478	AY19681
5.75 – 9.00	AY12689-2*	AY23492	AY19681-1
3.75 – 7.00	AY12690	AY23479	AY23488
3.75 – 7.00	AY12690-2*	AY23480	AY23489
3.25 – 6.50	AY12692	AY23483	AY19799
3.25 – 6.50	AY12692-2*	AY23484	AY19799-1
2.50 – 5.75	AY12691	AY23481	AY23490
2.50 – 5.75	AY12691-2*	AY23482	AY23491

* Includes corrosion-resistant fasteners

Refer to Table 2 when ordering only replacement die blocks.

Table 2: Die Block Replacement Parts

Range	Current Design	Die Block (Fixed Side)	Die Block with Integrated Stops (Cylinder Side)
5.75 – 9.00	DT14330	DT33179	DT31839
3.75 – 7.00	DT14331	DT33180	DT33187
3.25 – 6.50	DT14333	DT33182	DT33132
2.50 – 5.75	DT14332	DT33181	DT33188